


VC720504MUK Rev1

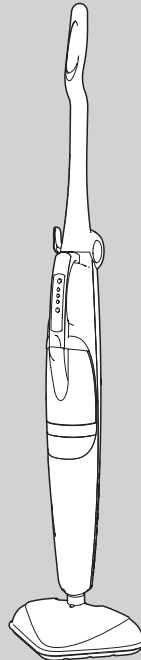
morphy richards[®]

smart ideas for your home



POWER
STEAMPRO
PULSONIC Steam Cleaner

 Please read and keep these instructions for future use



IMPORTANT: To prevent limescale problems which would not be covered by the guarantee, use only deionised, demineralised or distilled water (available from most large supermarkets). The anti-scale cartridge will reduce the effects of limescale but must be regularly replaced as advised on page 6.

SPARES:

All spares, eg. micro-fibre cloths and anti-scale cartridges may be purchased by calling our UK spares line directly on: **0844 873 0726** or logging onto **www.morphyrichards.com**

For competitions, product hints and tips and more join us at



www.morphyrichards.co.uk/blog



www.facebook.com/morphyrichardsuk



[@loveyourmorphy](https://twitter.com/loveyourmorphy)

www.morphyrichards.com

* Register online for your 2 year guarantee. See back of this instruction book for details. (UK and Ireland customers only)

Health and Safety

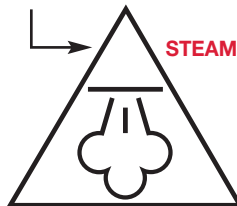
The use of any electrical appliance requires the following common sense safety rules.

Please read these instructions carefully before using the product.

- **WARNING: Disconnect from the mains supply before carrying out any routine maintenance.**
- This appliance can be used by persons with reduced physical, sensory or mental capabilities, or lack of experience and knowledge, if they have been given supervision or instruction concerning the use of the appliance in a safe way and understand the hazards involved.
- Children shall not play with the appliance.
- Cleaning and user maintenance shall not be undertaken by children without supervision.

Personal safety

- **WARNING: Never direct steam at electrical components or fittings. If in doubt about the suitability of steam for cleaning an appliance, contact the appliance manufacturer for advice prior to cleaning.**
- **WARNING: Never touch the plug or cable with wet hands.**
- **WARNING: The nozzle will be hot after use. Allow to cool before attempting to remove.**
- **WARNING: Do not discharge the steam towards people or animals. Danger of scalding.**



- **WARNING: Do not use the appliance without the filler cap in place.**
- To protect against fire, electric shock and personal injury, do not immerse cord, plug or steam cleaner in water or other liquid.
- The plug should be removed from the wall socket after use, before cleaning, filling or changing the accessories, or carrying out user maintenance.
- Keep the appliance out of reach of children when it is energised or cooling down.

Location

- Do not use or keep this product outside.
- Do not store the appliance near hot surfaces eg. ovens or heating appliances.

Mains cable

- **WARNING: A damaged or severed mains cable fitted with a plug should never be connected to the mains supply. It must be destroyed, as a damaged cable becomes hazardous if connected to a power socket.**
- If the supply cord is damaged, it must be replaced by the manufacturer, its service agent, or similarly qualified person to avoid a hazard.
- Do not allow the mains lead to become strained.

Product safety

- **WARNING: Always test on an inconspicuous area first. Never use on materials that can not resist high temperature, such as dralon, natural fur etc.**
- Never modify the steam cleaner in any way.
- Never operate the steam cleaner without water in the tank. Always top-up with water during extended periods of use.
- Never fill the steam cleaner's tank with anything other than deionised, demineralised or distilled water.

- The appliance is not to be used if it has been dropped, if there are visible signs of damage or if it is leaking.

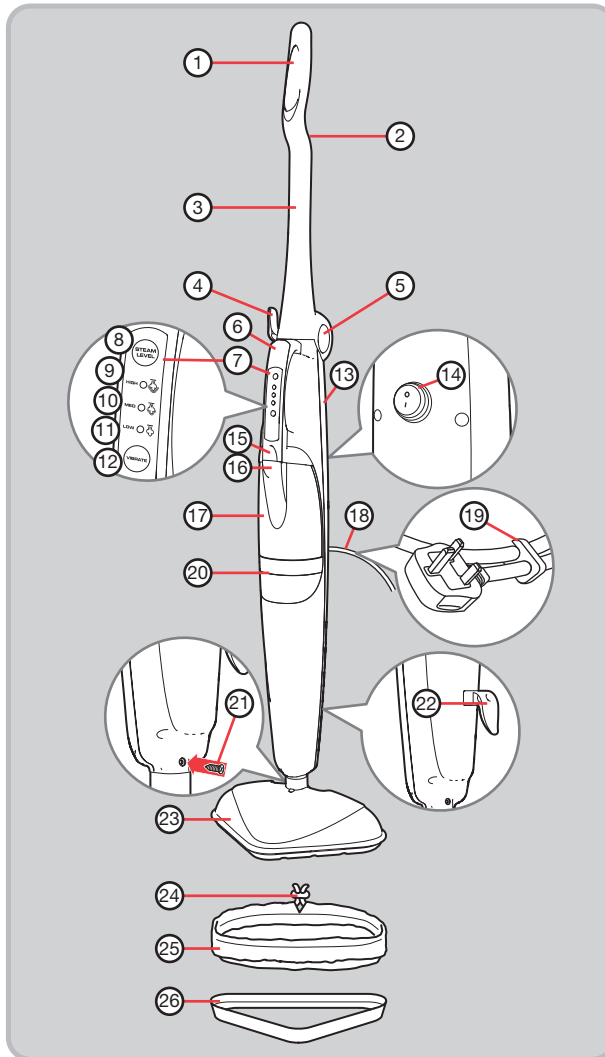
Other safety considerations

- Do not use any chemical detergents, perfumes, alcohol or descaler etc in water.
- Repairs to electrical appliances are only to be undertaken by trained personnel.
- Unprofessional repairs can be dangerous for users.
- Use only genuine Morphy Richards spare parts and accessories.
- The appliance must not be left unattended while connected to the supply mains.
- This steam cleaner is intended for domestic use only. Misuse or use for commercial or any other purpose will render the guarantee invalid.

Electrical requirements

- Check that the voltage on the rating plate of your appliance corresponds with your house electricity supply which must be A.C. (Alternating Current).
- If the socket outlets in your home are not suitable for the plug supplied with this appliance the plug should be removed and the appropriate one fitted.
- **WARNING: This appliance must be earthed.**
- Should the fuse in the mains plug require changing, a 13 amp BS1362 fuse must be fitted.

Product overview



Features

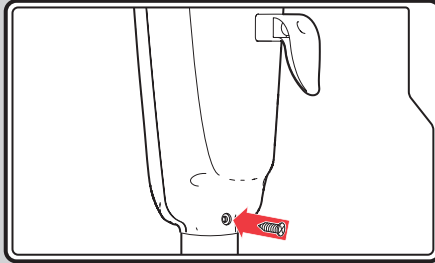
- (1) Steam trigger
- (2) Cord holder
- (3) Upright handle
- (4) Upper cord storage hook (rotatable)
- (5) Collapsible handle release/restore button
- (6) Main body handle
- (7) Steam control console
- (8) Steam level select button
- (9) High steam level indicator light
- (10) Medium steam level indicator light
- (11) Low steam level indicator light
- (12) Vibrate button
- (13) Main body
- (14) On/off button
- (15) Water tank release slide
- (16) Water tank removal grip
- (17) Water tank
- (18) Power cord
- (19) Power cord clip
- (20) Anti scale cartridge
- (21) Floorhead securing screw
- (22) Lower cord storage hook
- (23) Floorhead
- (24) Micro-fibre floor cloth tightening toggle
- (25) Micro-fibre floor cloth
- (26) Carpet glider

Operating the appliance

IMPORTANT: Please remember that the steam cleaner operates by emitting steam at an increased temperature of 115°C. Always test on an inconspicuous area first. Never use it on objects or surfaces which cannot resist this temperature, or on surfaces with coatings or polishes, or on delicate materials such as dralon, plastic, natural fur or antique items etc.

If in doubt, check carefully on a part of the material where minor marks will not matter.

Assembling the appliance



Slide the steam outlet at the base of the main body (13) onto the mating spigot of the floorhead (23) and secure with the floorhead securing screw (21) provided. A cross-head screwdriver will be required to tighten the screw.

NOTE: The floorhead securing screw is supplied in a small plastic bag taped on the inside of the internal packing sleeve.

Steam cleaning floors

IMPORTANT: Before use, hardfloors should be thoroughly swept and carpets should be thoroughly dry vacuumed. However, we recommend that the steam cleaner is not used on:

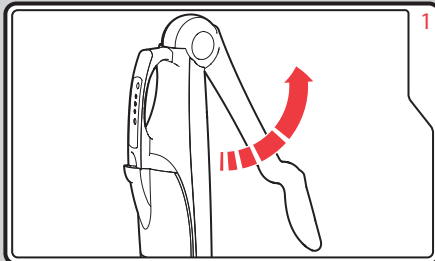
- bare wooden floors or any surfaces where wood is exposed (as it will absorb moisture and may distort).
- damaged hardfloors or hardfloors with gaps present (as it will absorb moisture and may distort).

Also, do not keep the steam cleaner in one place for an extended period, because the continual heat may cause damage to carpets and laminate flooring.

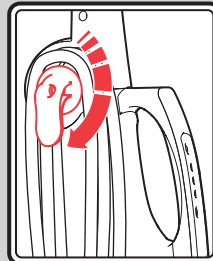
On wood and laminate flooring, do not make the floor overly wet - always set the steam to minimum.

Please disconnect and allow the unit to cool before changing cloths and attachments.

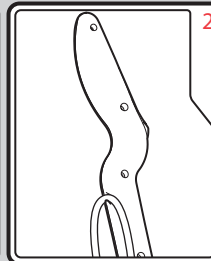
Switching the product on



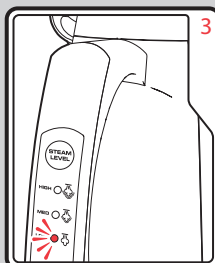
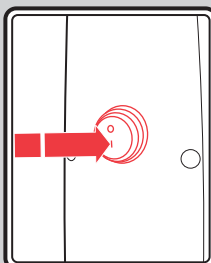
Press the collapsible handle release/restore button (5), then swing the upright handle (3) upwards until it clicks into place in an upright position.



Rotate the upper cord storage hook (4) to quickly release the power cord (18).



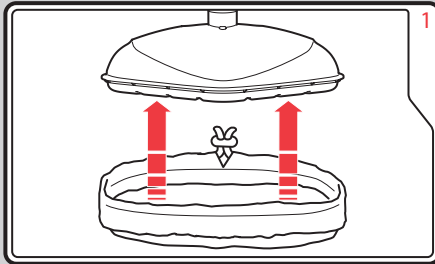
Secure the power cord in the cord holder (2) whilst using the cleaner.



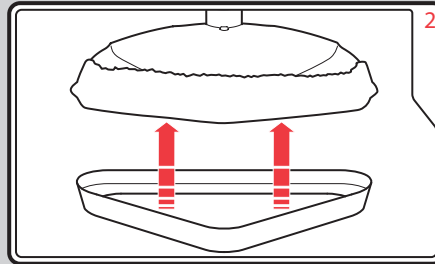
Connect the plug to the mains supply. Switch the product on using the on/off button (14).

The low steam level indicator light (11) will illuminate to show the product is active.

Steam cleaning floors

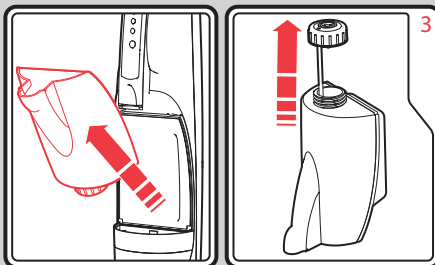


Attach the micro-fibre floor cloth (25) to the floorhead (23), securing it in place by tightening the toggle (24).



If cleaning carpet, rest the floorhead (23) with the micro-fibre floor cloth (25) attached into the carpet glider (26) to make it easier to move the floorhead across the carpet.

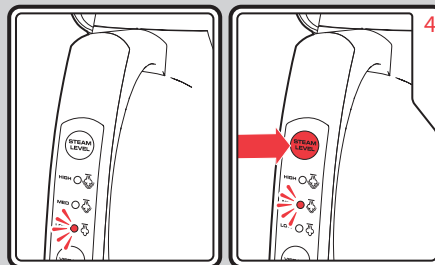
NOTE: The carpet glider is designed to make it easier to move the floorhead across the carpet and is intentionally a loose fit on the floorhead.



Remove the water tank (17) by pushing up the water tank release slide (15), then pull the water tank forwards and out using the water tank removal grip (16). Once removed, turn the water tank upside-down and unscrew the cap on the base. Fill the water tank.

IMPORTANT: To prevent limescale build-up in the water tank, never fill the steam cleaner's tank with anything other than deionised, demineralised or distilled water (available from most leading supermarkets). Any problems arising from limescale will invalidate the product guarantee.

Replace the screw cap firmly and return the water tank into the main body (13).



WARNING: Before switching ON, ensure the floorhead is located safely away from persons or animals.

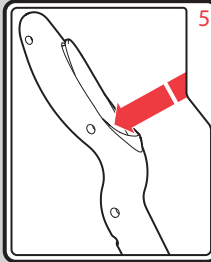
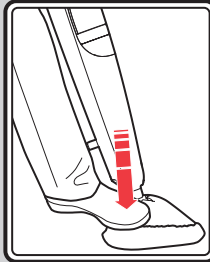
Plug in at the mains outlet. Switch the product on using the on/off button (14). The low steam level indicator light (11) will illuminate and steam will be ready to be emitted from the floorhead after around 30 seconds.

Select the desired steam level by pressing the steam level select button (8) until the indicator light next to your desired level is illuminated:
low steam (11), for use on laminates and wood.
medium steam (10), for use on vinyls or carpets.
high steam (9) for use on ceramics.

Operate the trigger intermittently to prevent over-wetting the floor, enabling faster drying.

Never hold the steam cleaner continuously in one place, as excess moisture and heat may adversely affect some floor surfaces.

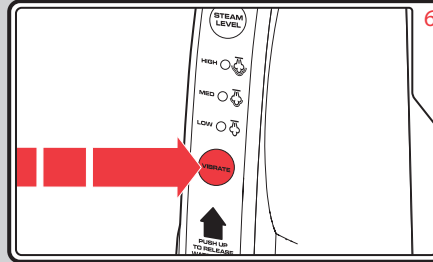
Steam cleaning floors (continued)



Hold the floorhead (23) to the floor with your foot and tilt the steam cleaner back.

Press and hold the steam trigger (1) to emit steam from the floorhead. To stop steam, release the steam trigger.

Move the steam cleaner backwards and forwards across the floor.



If attempting to steam clean a heavily soiled area, it may be necessary to operate the vibrate function. This will vibrate the floorhead (23) to help agitate the dust and dirt. To use this function, press the vibrate button (12). To stop the vibrate function, press the vibrate button again.

Anti-scale

Limescale

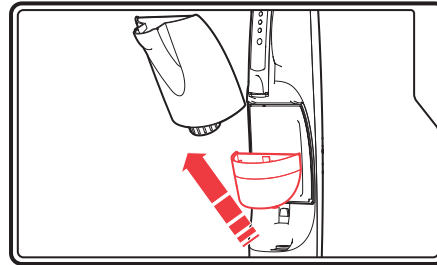
Tap water contains minerals which can result in a build-up of limescale in the boiler. This can severely affect the steam output. The anti-scale cartridge (20) treats the water before it enters the boiler to minimise the effects of these minerals, but after a maximum of three months use, it will lose its effectiveness and must be replaced. This should be reduced further in areas of very hard water or if the cleaner is used extensively.

To prevent limescale build-up in the water tank, never fill the steam cleaner's tank with anything other than deionised, demineralised or distilled water (available from most leading supermarkets). The use of the correct water is an additional precaution that should be taken to ensure the performance of the boiler is maximised.

Replacing the anti-scale cartridge (20)

1. To access the anti-scale cartridge, first remove the water tank (17) as described in step 3 of 'Steam cleaning floors', page 5.

2. Firmly grip the sides of the anti-scale cartridge and pull upwards and away from the product. There may be excess water that could spill from the cartridge.



3. Replace with the new anti-scale cartridge, pushing firmly into place. Replacement cartridges can be purchased by calling our UK helpline directly on: 0844 873 0726 or logging onto www.morphyrichards.com.

4. The resin crystals within the cartridge are a mild irritant. Do not break open the cartridge.



- Dispose of the used anti-scale cartridge with your household waste.

After use

Follow the two maintenance steps below after every use.

- Switch the steam cleaner off and unplug from the socket. Place immediately on a suitable surface (eg. tiled floor) where the residual heat/moisture in the floor nozzle/cloth will not affect the surface. Wait until the steam cleaner has cooled down completely.
- Remove the micro-fibre floor cloth (25) to either air dry or wash.
- Empty the water tank (17) by removing it from the main body (13) (see step 3 of 'Steam Cleaning Floors' on page 5), and pour out the water.

Allow the inside of the water tank to dry out before replacing the screw cap.

Return the water tank to the main body.

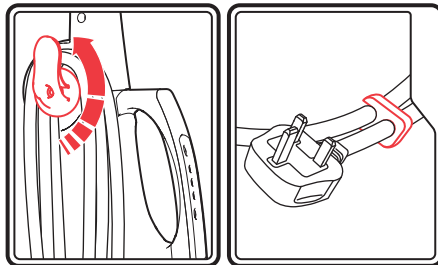
Storage

We recommend storing the steam cleaner in the carpet glider (26), but with the cloths removed.

Swing the upright handle (3) down by pressing the collapsible handle release/restore button (5).

Rotate the upper cord storage hook (4) to an upwards position. Wrap the power cord (18) around the two cord storage hooks (4/22).

Secure the cord in place using the power cord clip (19).



Maintenance

WARNING: Always unplug the steam cleaner from the mains supply before undertaking any maintenance procedures.

Overall maintenance

Your steam cleaner is manufactured to withstand normal day-to-day use, but an occasional wipe over with a damp cloth will help maintain it. Abrasive cleaners should not be used.

Cleaning the cloths

The micro-fibre floor cloth (25) can be machine washed (40°C max). For heavy soiling, soak the cloths in warm water and detergent or a mild stain remover.

IMPORTANT: Do not use bleach or fabric softener.

Allow to completely dry before storing.

Replacement cloths can be purchased by calling our UK helpline directly on: 0844 873 0726 or logging onto www.morphyrichards.com.

Contact us

Helpline

If you are having a problem with your appliance, please call our Helpline, as we are more likely to be able to help than the store you purchased the item from.

Please have the product name, model number and serial number to hand when you call to help us deal with your enquiry quicker.

UK Helpline: 0844 871 0960

IRE Helpline: 1800 409 119

Spares: 0844 873 0726

Talk To Us

If you have any questions or comments, or want some great tips to help you get the most out of your products, join us online:

Blog: www.morphyrichards.co.uk/blog

Facebook: www.facebook.com/morphyrichardsuk

Twitter: www.twitter.com/loveyourmorphy

Website: www.morphyrichards.com

VC720504MUK Rev1 08/13

Registering your 2 year guarantee

Your standard 1 year guarantee is extended for an additional 12 months when you register the product within 28 days of purchase with Morphy Richards. If you do not register the product with Morphy Richards within 28 days, your product is guaranteed for 1 year. To validate your 2 year guarantee, register with us online at

www.morphyrichards.co.uk

Or call our customer registration line

UK 0844 871 0962

IRE 1800 409 119

N.B. Each qualifying product needs to be registered with Morphy Richards individually.

Please note that the 2 year guarantee is only available in the UK and Ireland. Please refer to the 1 year guarantee for more information.

Your 1 year guarantee

To qualify for the 1 year guarantee, the appliance must have been used according to the instructions supplied.

It is important to retain the retailer's receipt as proof of purchase. Staple your receipt to this back cover for future reference.

Please quote the following information if the product develops a fault. These numbers can be found on the base of the product.

Model no.

Serial no.

All Morphy Richards products are individually tested before leaving the factory. In the unlikely event of any appliance proving to be faulty within 28 days of purchase, it should be returned to the place of purchase for it to be replaced.

If the fault develops after 28 days and within 12 months (2 years if registered) of original purchase, you should contact the Helpline number quoting Model number and Serial number on the product, or write to Morphy Richards at the address shown.

You may be asked to return a copy of proof of purchase.

Subject to the exclusions set out below (see Exclusions), the faulty appliance will then be repaired or replaced and dispatched usually within 7 working days of receipt.

If you suspect a fault, follow the simple checks detailed below before retrying the appliance or calling the helpline.

- Check the steam outlet is not blocked.
- Check the plug is firmly in the socket.
- Check the socket is working by trying another appliance.
- Check the fuse in the plug.

If, for any reason, this item is replaced during the 1 year guarantee period, the guarantee on the new item will be calculated from original purchase date. Therefore it is vital to retain your original till receipt or invoice to indicate the date of initial purchase.

This appliance is intended for domestic use only. Misuse or use for commercial or any other purpose will render the guarantee invalid.

Exclusions

Morphy Richards shall not be liable to replace or repair the goods under the terms of the guarantee where:

- 1 The fault has been caused or is attributable to accidental use, misuse, negligent use or used contrary to the manufacturer's recommendations or where the fault has been caused by power surges or damage caused in transit.
 - 2 The appliance has been used on a voltage supply other than that stamped on the products.
 - 3 Repairs have been attempted by persons other than our service staff (or authorised dealer).
 - 4 The appliance has been used for hire purposes or non domestic use.
 - 5 The appliance is second hand.
 - 6 Morphy Richards reserves the right not to carry out any type of servicing under the guarantee at its discretion.
 - 7 The guarantee excludes consumables such as cloths and anti-scale cartridges.
 - 8 Any problems arise as a result of limescale build-up.
- This guarantee does not confer any rights other than those expressly set out above and does not cover any claims for consequential loss or damage. This guarantee is offered as an additional benefit and does not affect your statutory rights as a consumer. Morphy Richards products are intended for household use only. See usage limitations within the location safety instructions.

Disclaimer

Morphy Richards has a policy of continuous improvement in product quality and design. The company, therefore reserves the right to change the specification of its models at any time.



For electrical products sold within the European Community. At the end of the electrical products useful life, it should not be disposed of with household waste. Please recycle where facilities exist. Check with your Local Authority or retailer for recycling advice in your country.

**IF YOU ARE HAVING A PROBLEM
WITH ONE OF OUR PRODUCTS,
CALL OUR HELPLINE:**

**UK: 0844 871 0960
EIRE: 1800 409 119
SPARES: 0844 873 0726**

morphy richards

The After Sales Division
Morphy Richards Ltd
Mexborough,
South Yorkshire,
England, S64 8AJ

www.morphyrichards.com

